

**CHART NAME: APPLICATIONS FOR IMMIGRATION BENEFITS**

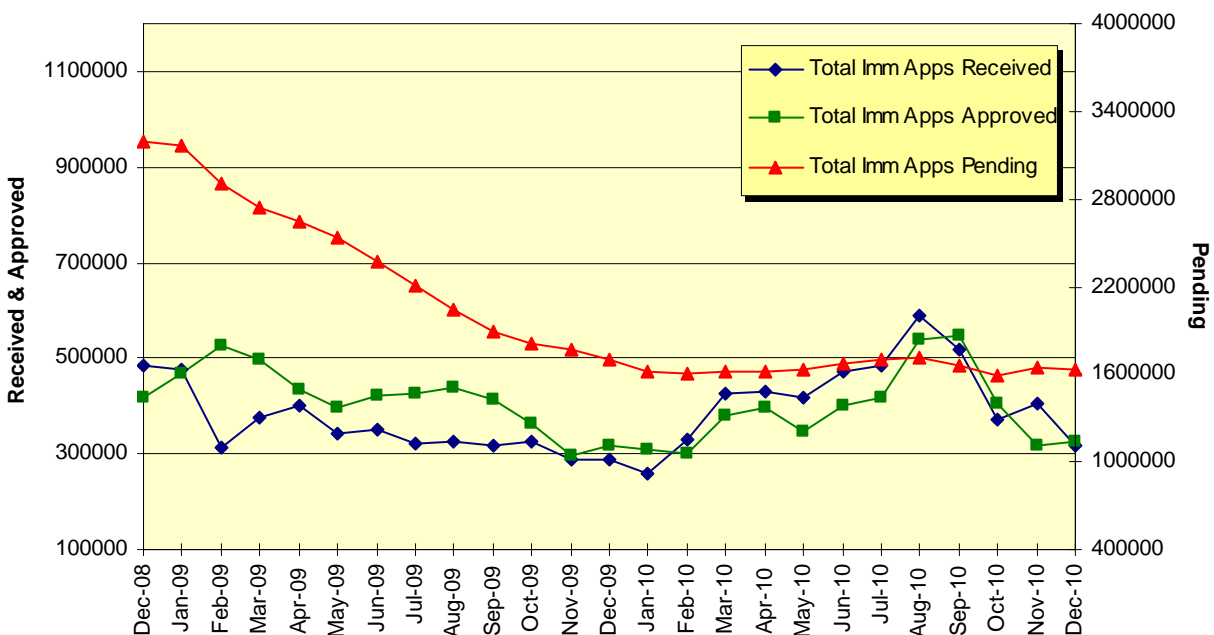
**WHAT IT DISPLAYS:** The below chart provides data on applications and petitions received by USCIS for immigration benefits in December 2010. This chart excludes all data associated with the citizenship related applications.

**WHAT IT SHOWS:** Immigration application receipts increased 11 percent compared to the number received in December 2009. December 2010 approvals increased by 2 percent, denials decreased by 18 percent, and pending decreased less than 4% compared to December 2009.

Immigration Applications	Month			Fiscal Year			Total FY 2009
	December 2010	December 2009	% Change	FY 2011 to Date	FY 2010 to Date	% Change	
<b>Received</b>	318,346	287,236	11%	1,094,234	900,842	21%	4,831,453
<b>Approved</b>	326,116	318,197	2%	1,051,098	977,810	7%	4,618,148
<b>Denied</b>	41,371	50,696	-18%	124,788	159,422	-22%	575,593
<b>Pending</b>	1,634,273	1,701,961	-4%	1,634,273	1,701,961	-4%	1,655,606

Data source: PAS G-22.2<sup>1</sup>

**Applications for Benefits: Received, Approved, and Pending**



- Major receipt volumes in December 2010 include: 68,009 I-765 employment authorizations; 65,584 I-130 immediate/all other petitions; 44,360 I-485 applications to adjust status; 41,878 I-90 green card renewals/replacements; 25,130 I-129 forms filed; 21,816 I-131 travel document/advance parole.
- Major volumes of pending applications at the end of December 2010 include: 471,691 I-130 immediate/all other petitions; 410,128 I-485 applications to adjust status; 214,591 I-90 green card renewals/replacements; 165,975 I-765 employment authorizations; 73,603 I-751 remove conditions spouse jointly/waive; 62,609 I-129 forms filed.

<sup>1</sup> The Performance Analysis System (PAS) is the USCIS System of Record for capturing and reporting field office and service center performance data. The G-22.2 is the PAS data entry worksheet used to collect monthly Immigration Application statistics.